

# SECURE SHELL AND REFLECTIONS V14

## A. Verify you are on the secured shell:

1. Click on Reflection V14 icon:
2. Log in as usual
3. Using the Reflections tool bar select: CONNECTION SETUP
4. The Connection Setup box will appear with Network option selected.
5. Secure Shell should be highlighted in the Connections box
6. Click "OK"

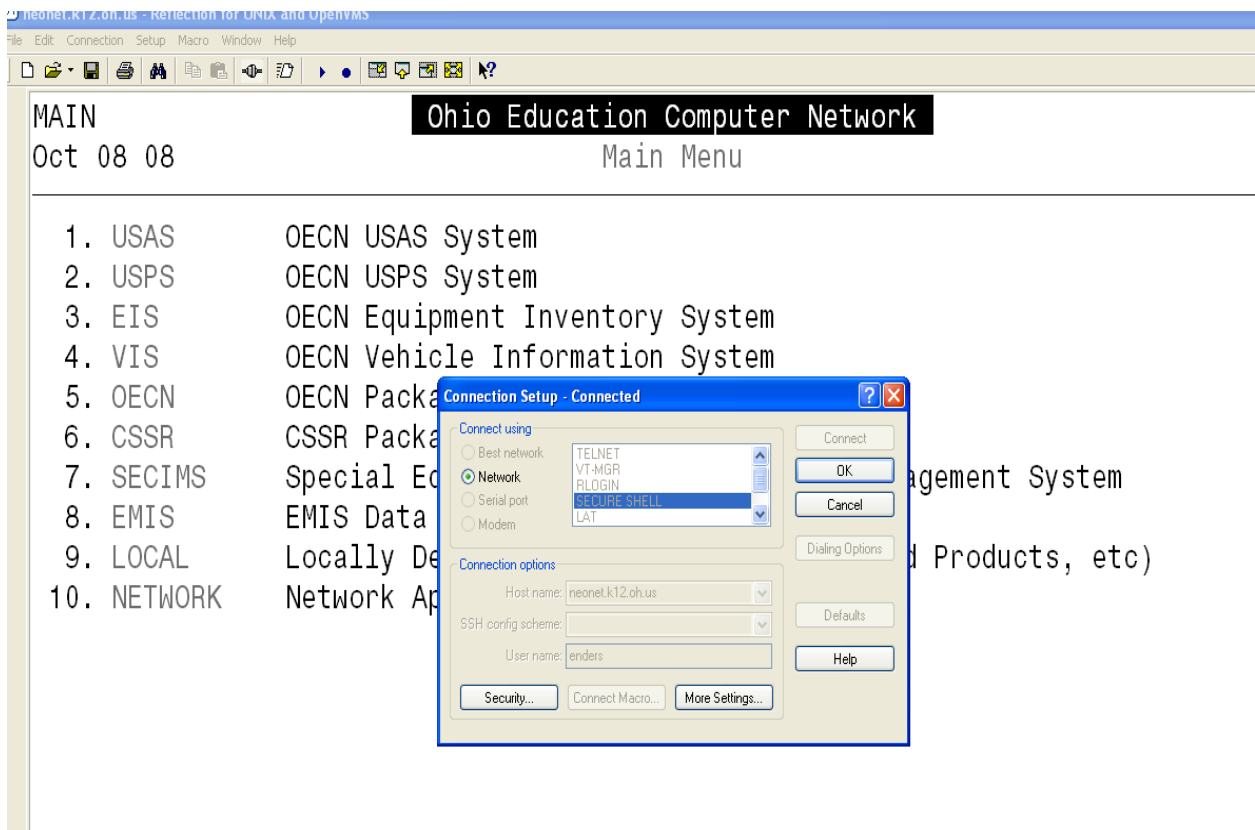
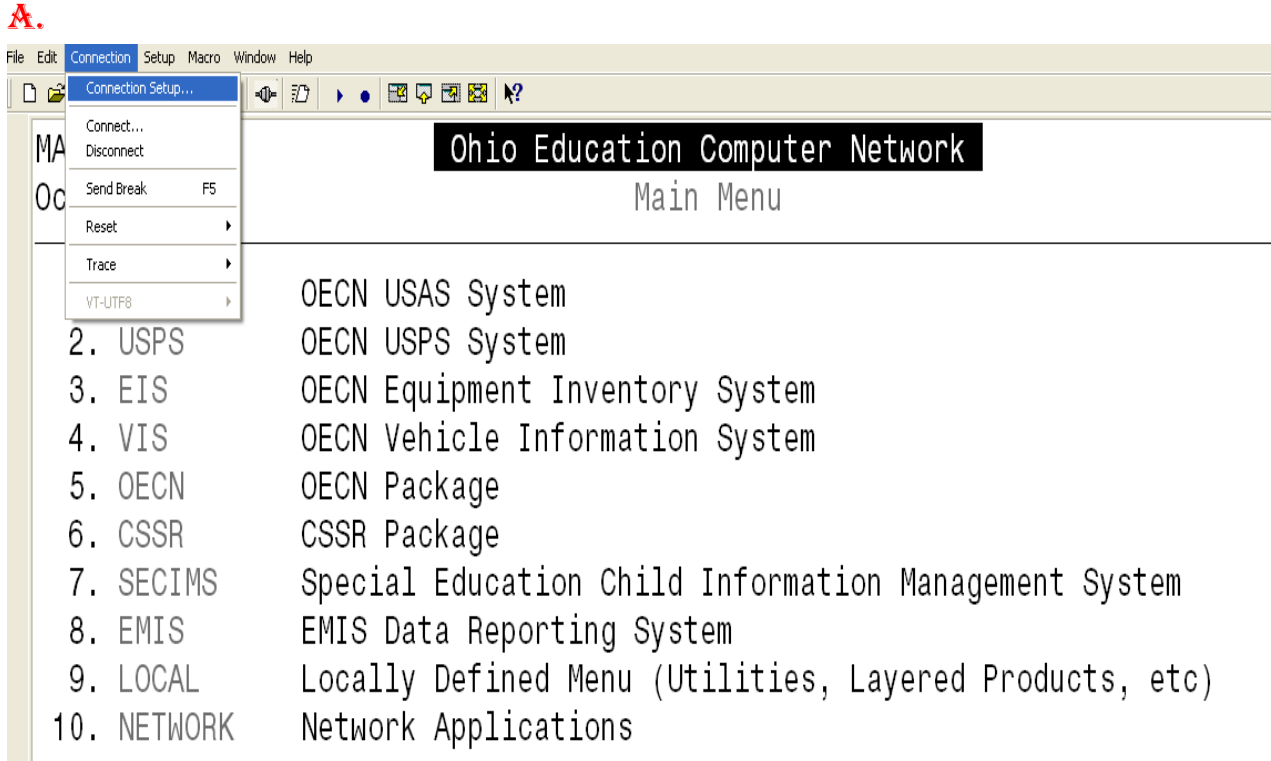


## B. Check to see if your user name is secured:

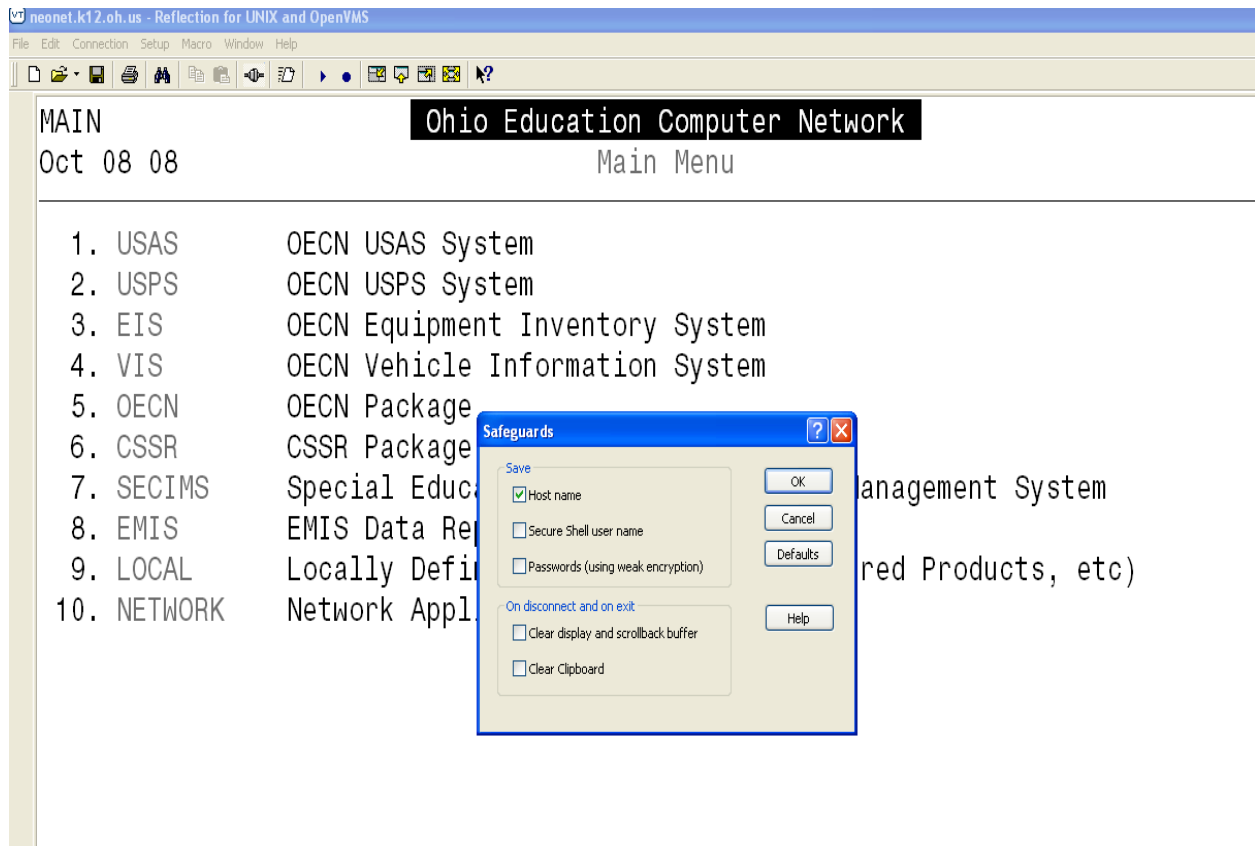
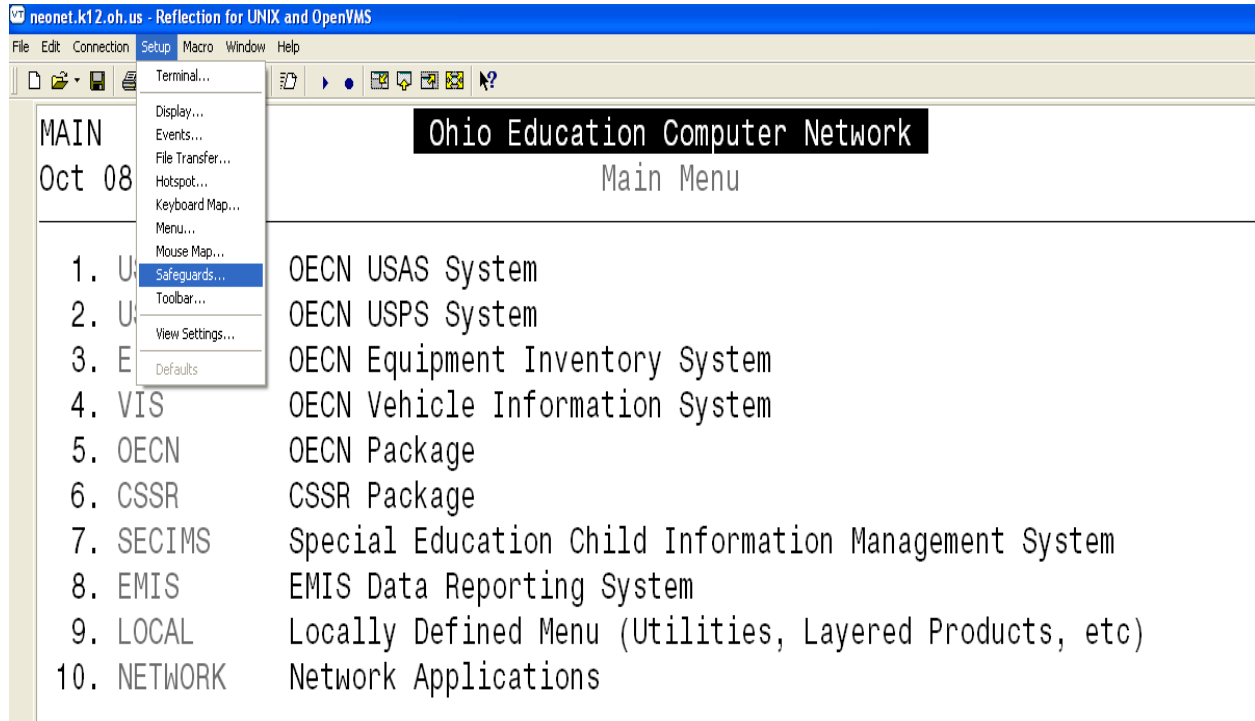
1. Using the Reflections tool bar select SETUP (drop down box appears) select Safeguards.
2. The Safeguard box will appear; if the SECURE SHELL USER NAME is selected **UNCHECK** it.
3. You must save your **NEW settings** in Reflections (see C. below) prior to selecting "OK"

## C. To Save your settings:

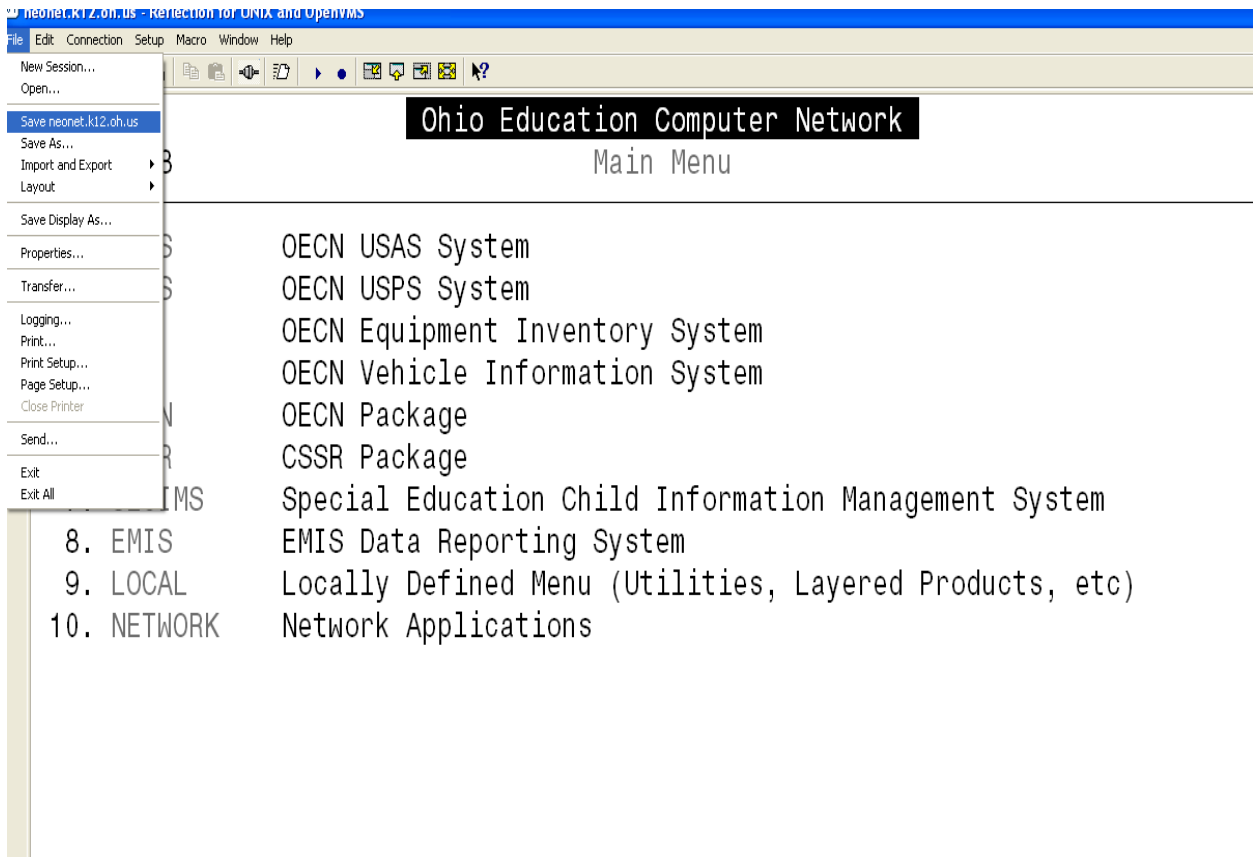
1. On the Reflections tool bar, select File, then save settings.



B.



C.



**Save your settings prior to exiting Reflections.**