

SECURE SHELL AND REFLECTIONS V14

A. Verify you are on the secured shell:

1. Click on Reflection V14 icon:
2. Log in as usual
3. Using the Reflections tool bar select: CONNECTION SETUP
4. The Connection Setup box will appear with Network option selected.
5. Secure Shell should be highlighted in the Connections box
6. Click "OK"

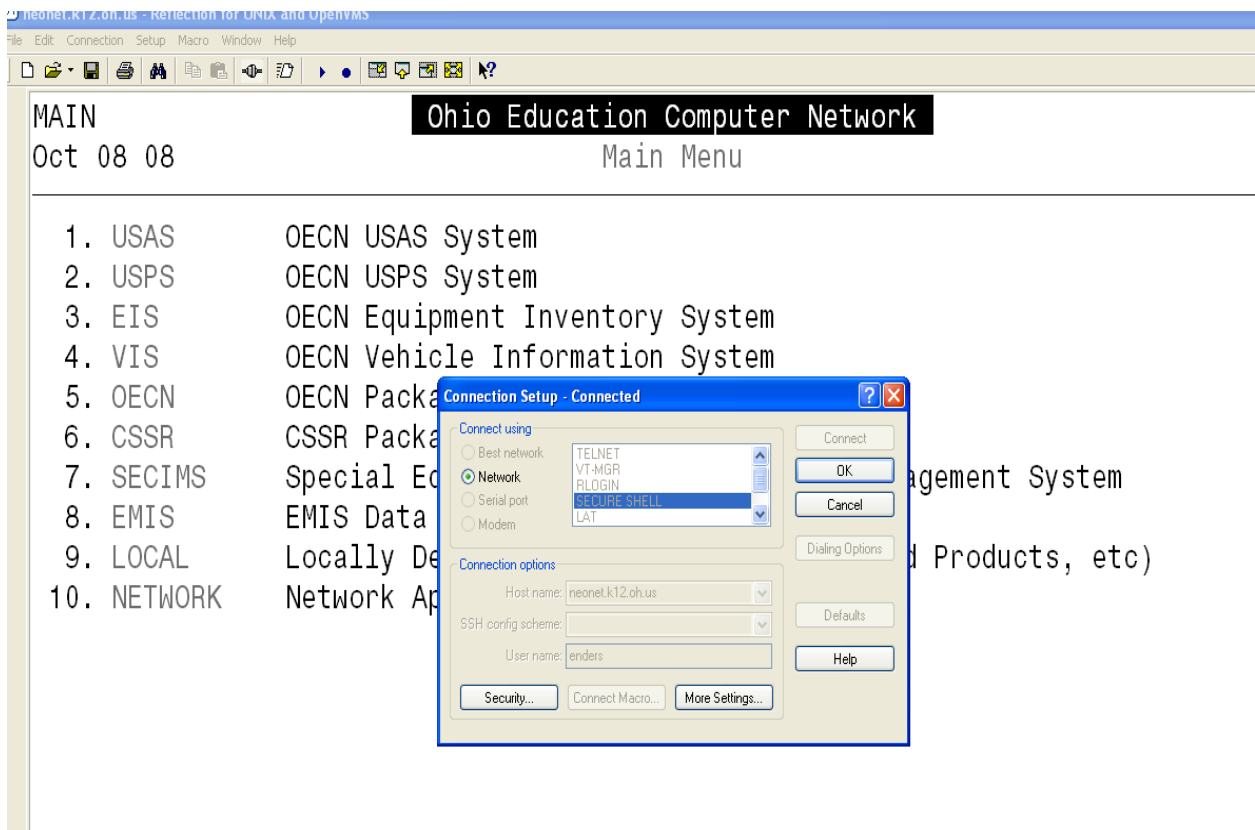
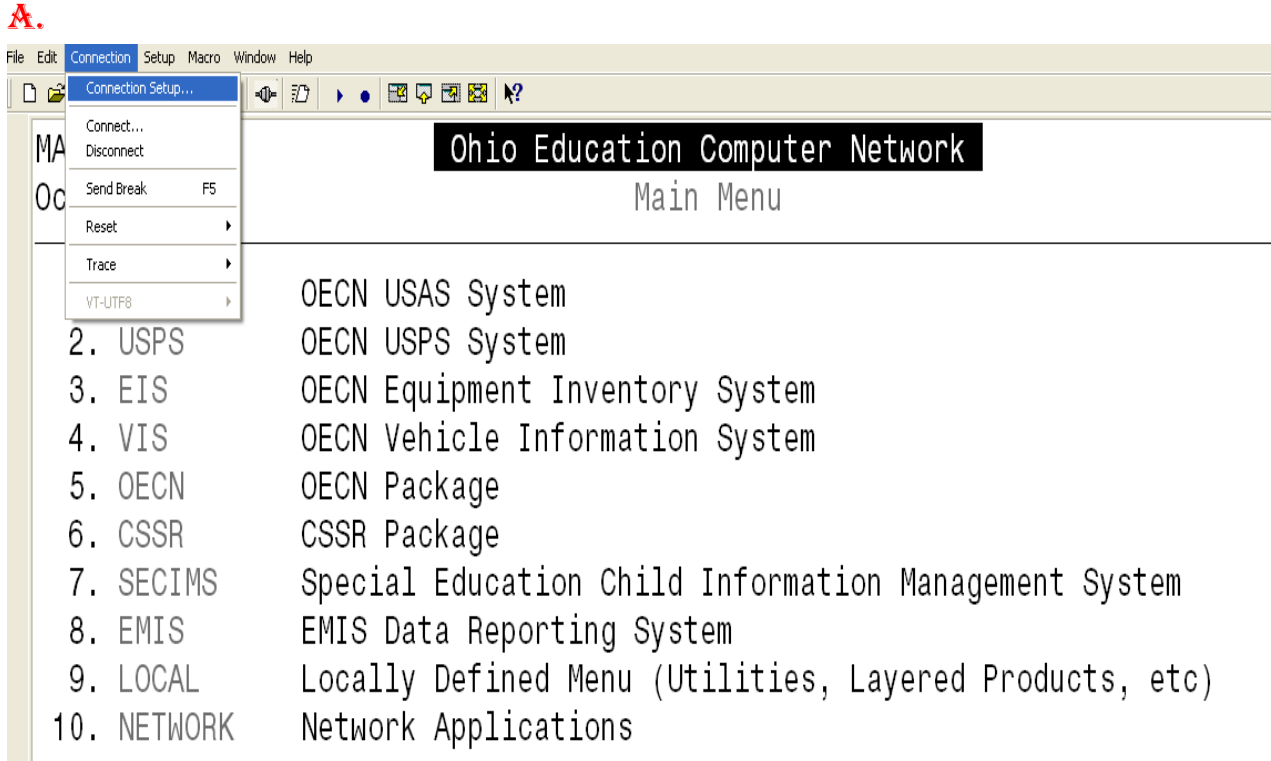


B. Check to see if your user name is secured:

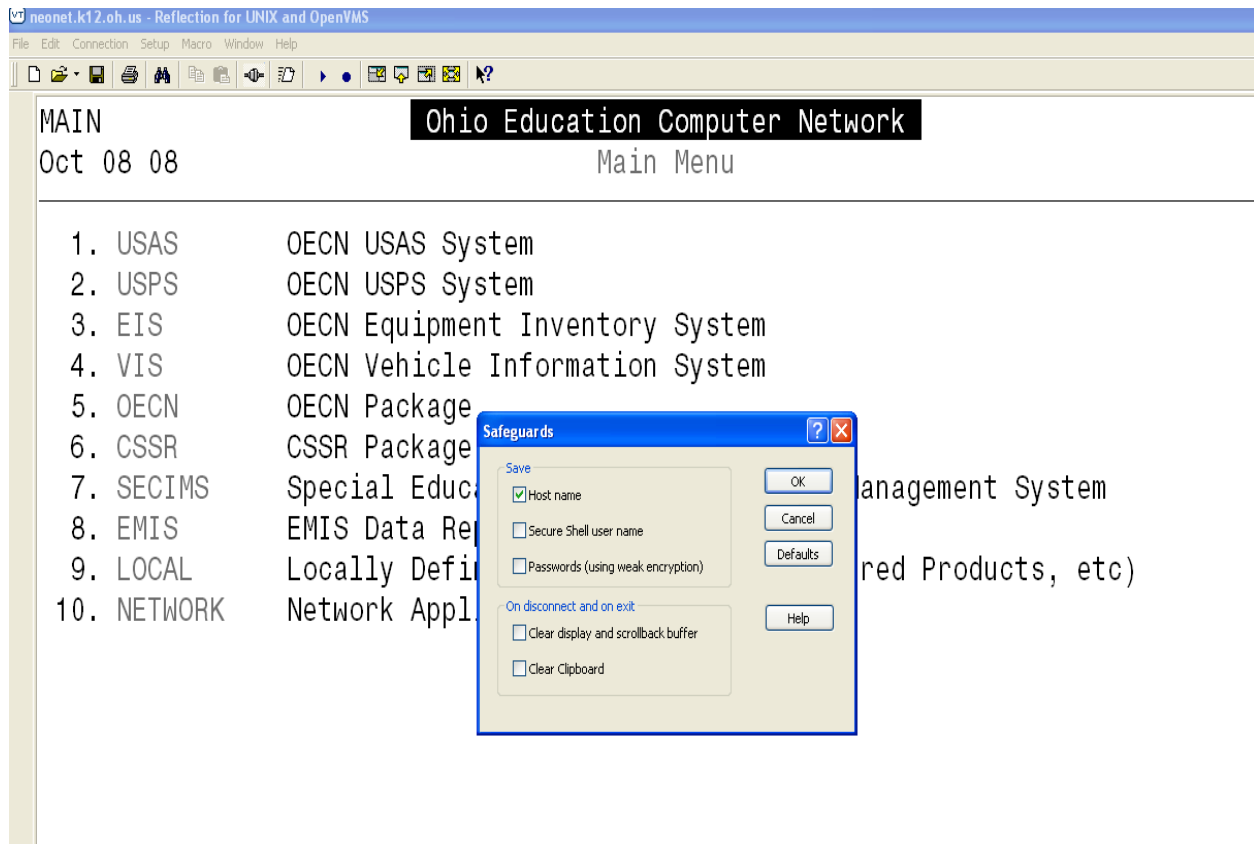
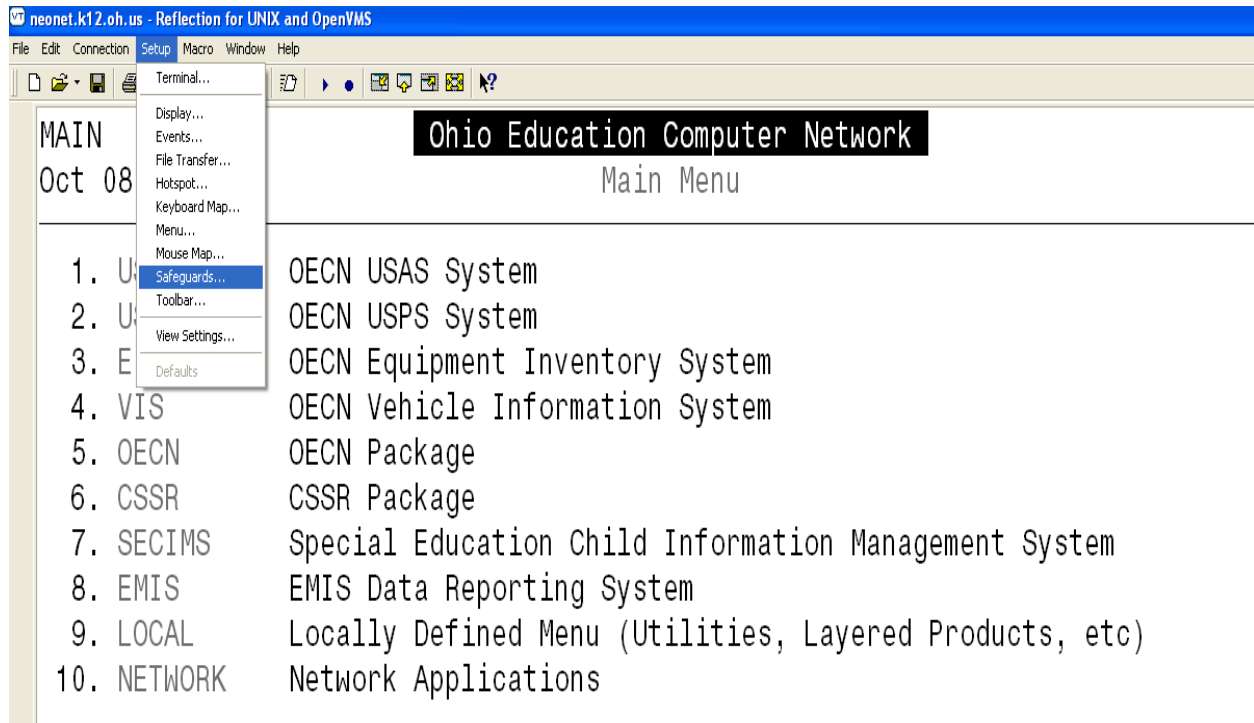
1. Using the Reflections tool bar select SETUP (drop down box appears) select Safeguards.
2. The Safeguard box will appear; if the SECURE SHELL USER NAME is selected **UNCHECK** it.
3. You must save your **NEW settings** in Reflections (see C. below) prior to selecting "OK"

C. To Save your settings:

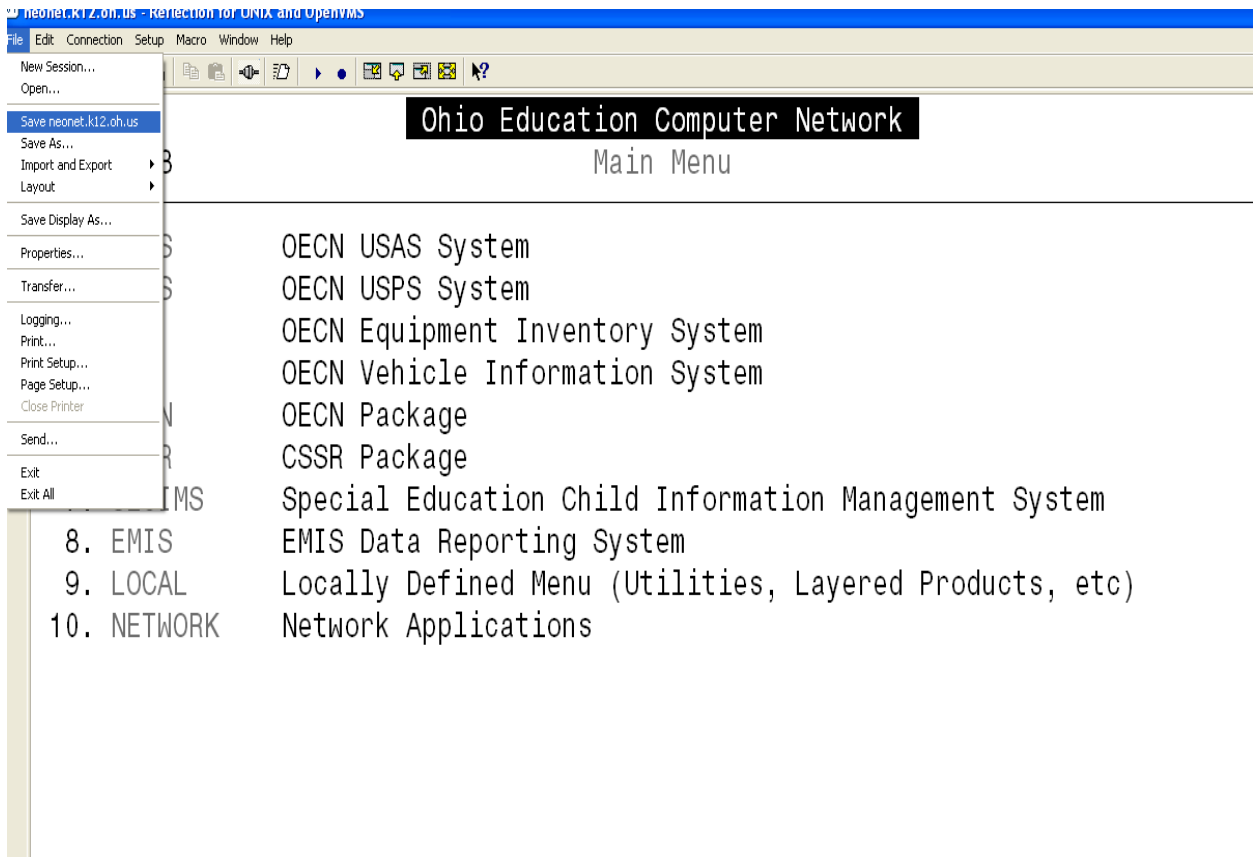
1. On the Reflections tool bar, select File, then save settings.



B.



C.



Save your settings prior to exiting Reflections.